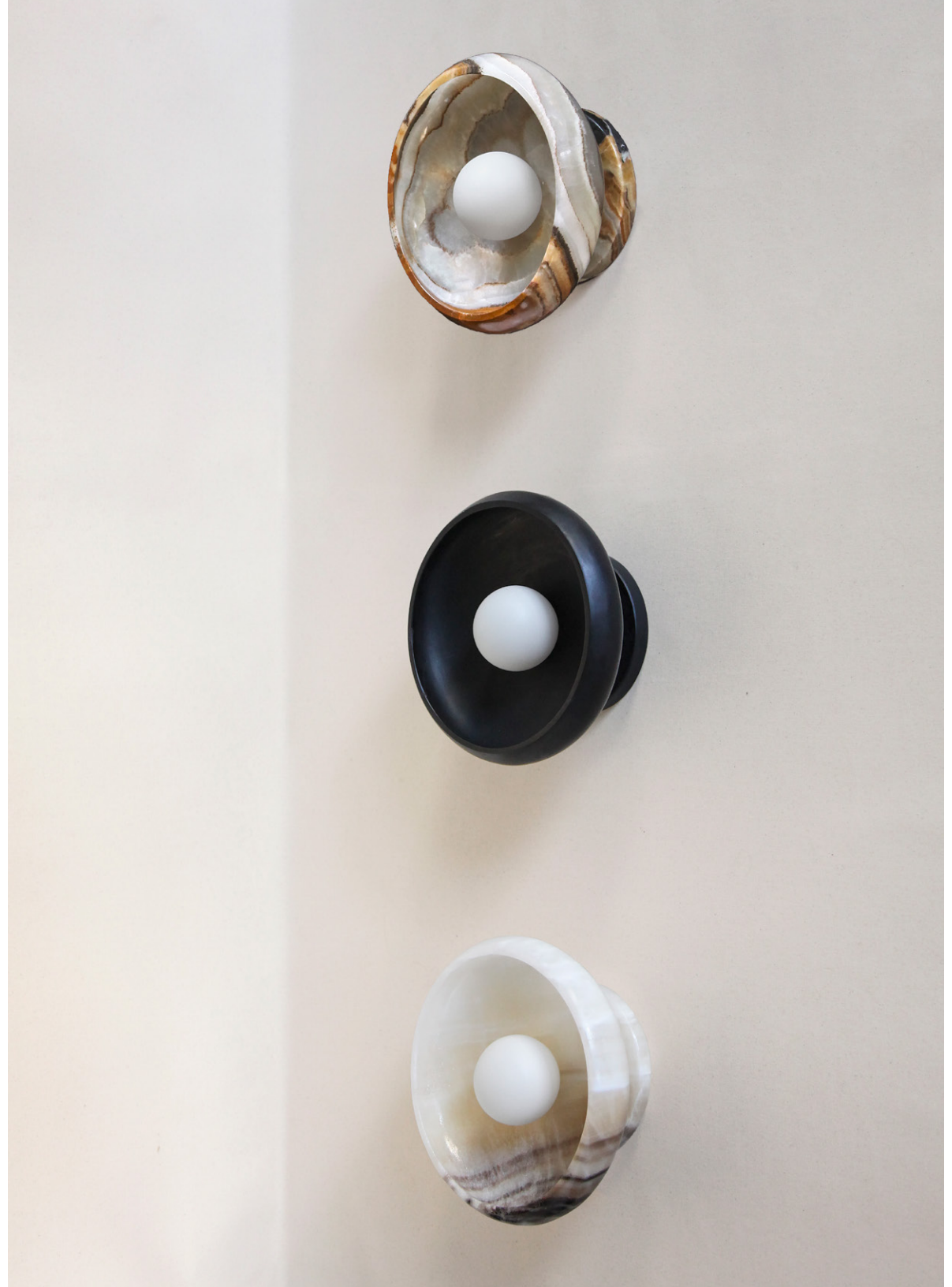
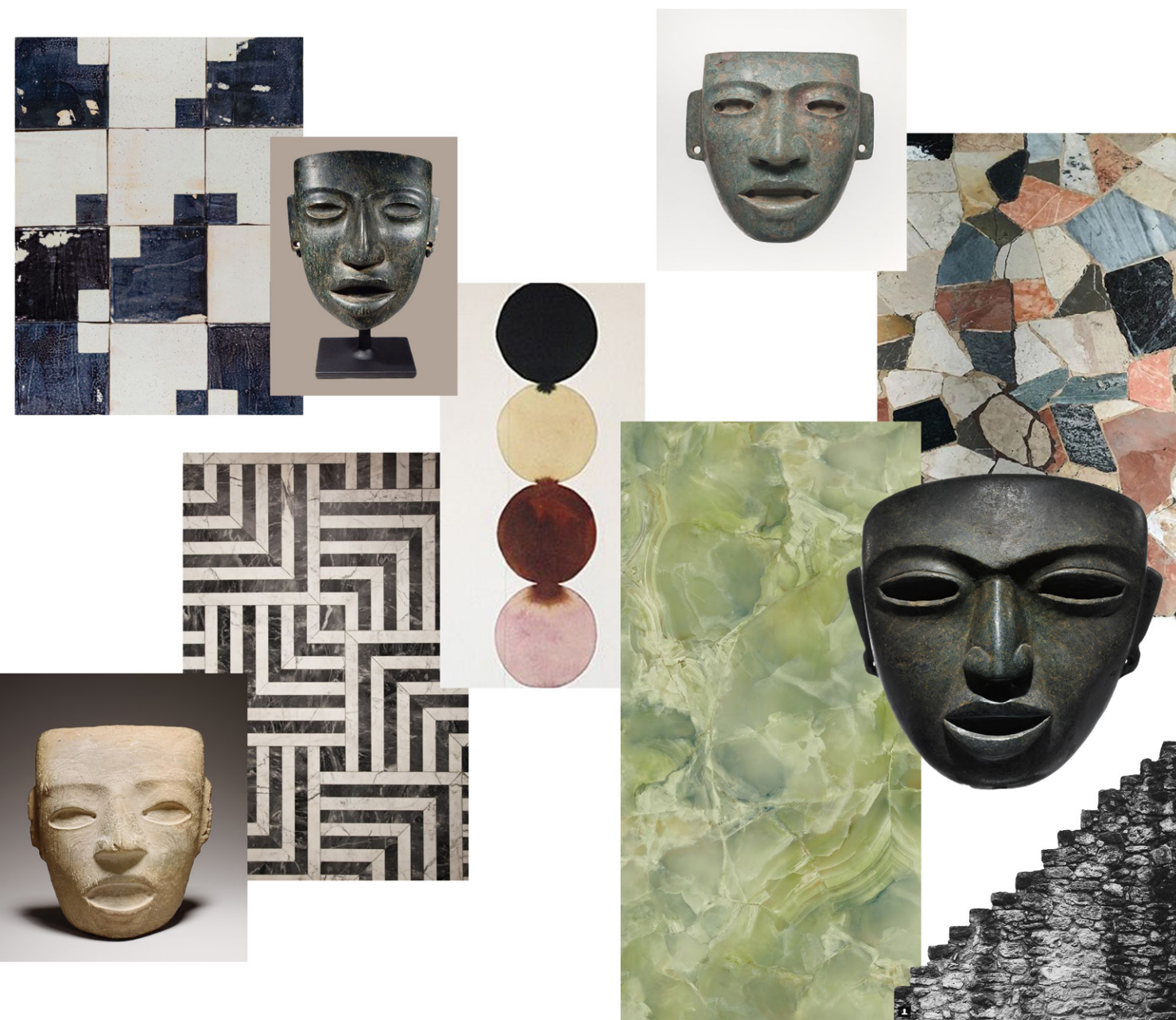




# PIEDRA COLLECTION

STONE SCONCES + SEMI-FLUSH MOUNTS





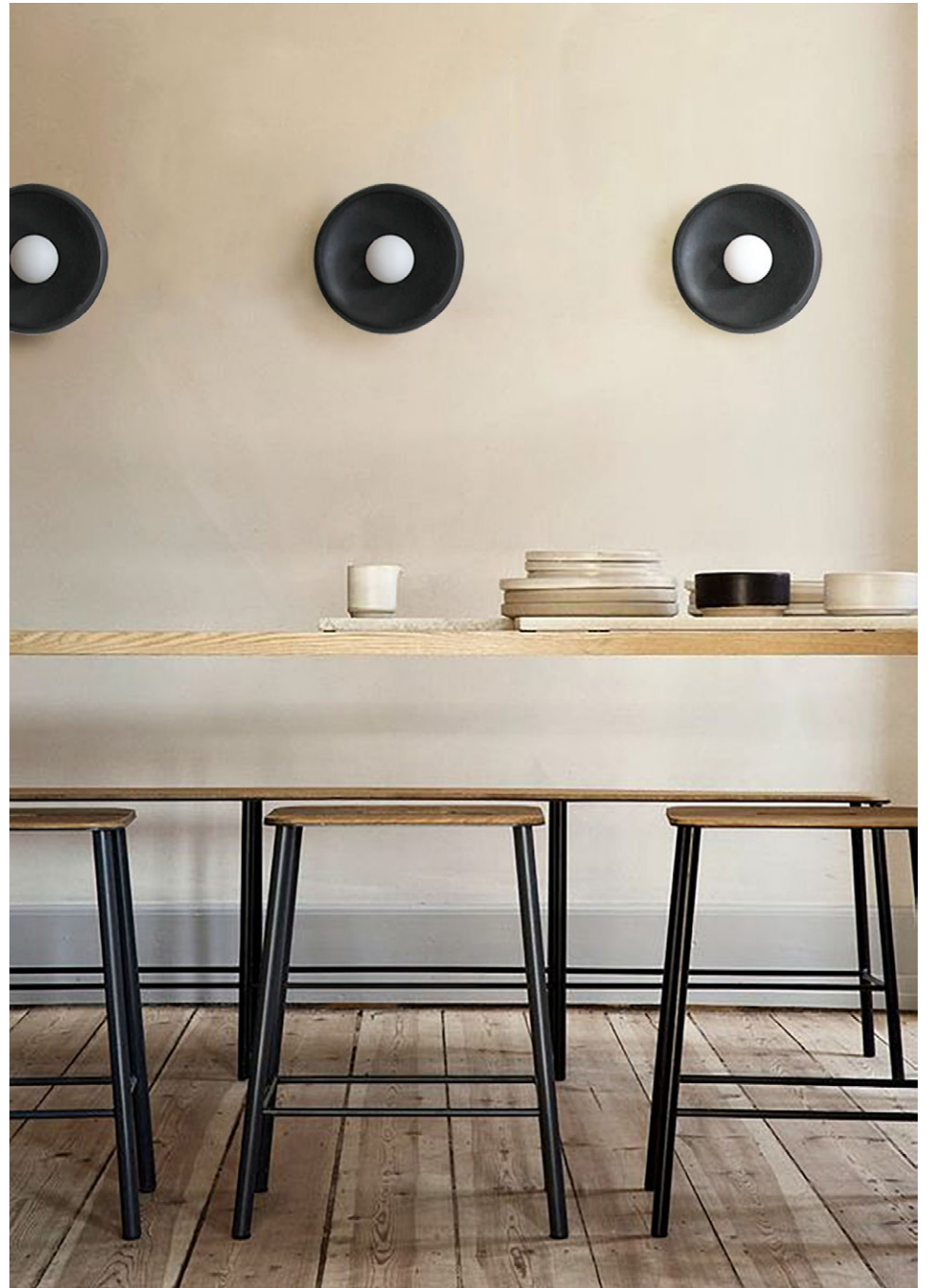
## PIEDRA COLLECTION

Our PIEDRA lighting takes its inspiration from the stone masks of the ancient civilization of Teotihuacán. Carved in the Mexican city of Tecali — which means 'stone house' in Nahuatl — the fixtures draw on the clean lines, defined angles, and streamlined silhouettes that epitomize the pre-Colombian stone masks. Sculpted from carefully chosen marble or onyx, each piece reflects the unique character of the individual stone from which it is formed.



LUTECA SHOWROOM, NYC





PIEDRA | SCONCES + SEMI-FLUSH MOUNTS



MILK ONYX	BLACK + WHITE ONYX	GREY MARBLE	BLACK MARBLE	TERRA ONYX	TRAVERTINE MARBLE
10" Ø x 5" h 25.5 cm Ø x 13 cm h	10" Ø x 5" h 25.5 cm Ø x 13 cm h	10" Ø x 5" h 25.5 cm Ø x 13 cm h	10" Ø x 5" h 25.5 cm Ø x 13 cm h	10" Ø x 5" h 25.5 cm Ø x 13 cm h	10" Ø x 5" h 25.5 cm Ø x 13 cm h
\$1,735.00	\$1,735.00	\$1,735.00	\$1,735.00	\$1,735.00	\$1,735.00

PIEDRA | LIT SCONCES + SEMI-FLUSH MOUNTS



MILK ONYX  
10" Ø x 5" h  
25.5 cm Ø x 13 cm h  
\$1,735.00

BLACK + WHITE ONYX  
10" Ø x 5" h  
25.5 cm Ø x 13 cm h  
\$1,735.00

GREY MARBLE  
10" Ø x 5" h  
25.5 cm Ø x 13 cm h  
\$1,735.00

BLACK MARBLE  
10" Ø x 5" h  
25.5 cm Ø x 13 cm h  
\$1,735.00

TERRA ONYX  
10" Ø x 5" h  
25.5 cm Ø x 13 cm h  
\$1,735.00

TRAVERTINE MARBLE  
10" Ø x 5" h  
25.5 cm Ø x 13 cm h  
\$1,735.00



## COLLECTION DETAILS

### STONES

Terra Onyx  
Milk Onyx  
Travertine Marble  
Black Marble  
Black + White Onyx  
Grey Marble

### HARDWARE

Brass (standard)  
Chrome (upon request)

### BACK PLATE DIMENSIONS

6" Ø x .5" h  
15 cm Ø x 1.5 cm h

### WEIGHT

~ 9 lbs / 4 kg

### LEAD TIME

8 to 10 weeks

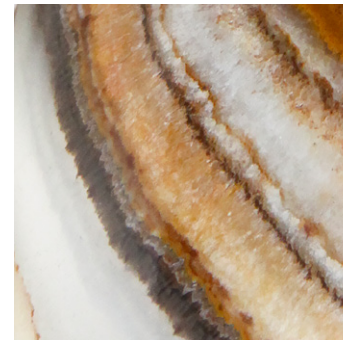
### LAMPING

Wall or ceiling mount; hardwired  
UL / cUL listed (120V)  
240V available upon request

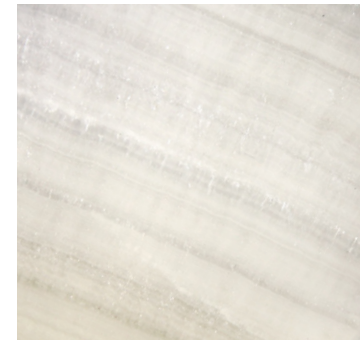
Tala, Porcelain II LED bulb included:  
540 lumen output  
6W | 60W replacement  
90 lumens/watt  
2700K / CRI 95 | matte white

Recommended US Dimmer:  
Lutron - Diva DVELV-300P-XX\*

*\*X denotes faceplate color*



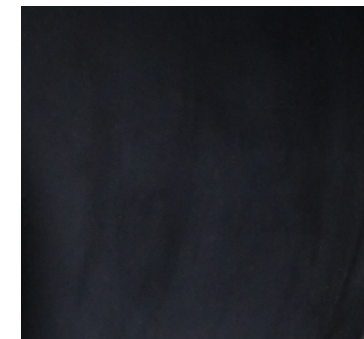
TERRA ONYX



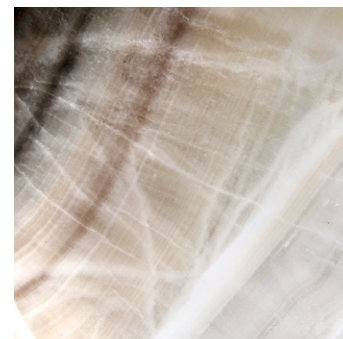
MILK ONYX



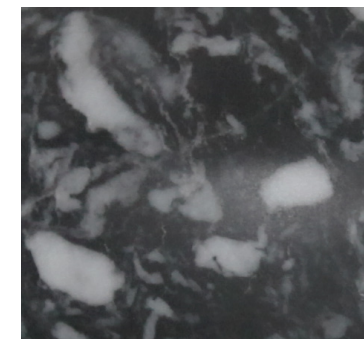
TRAVERTINE MARBLE



BLACK MARBLE

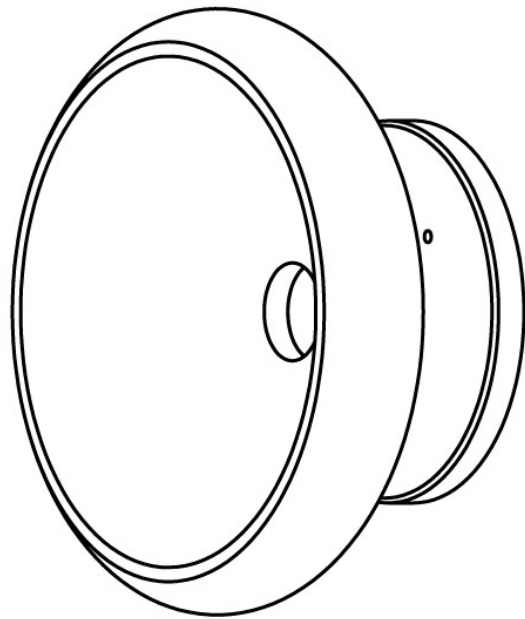


BLACK + WHITE ONYX

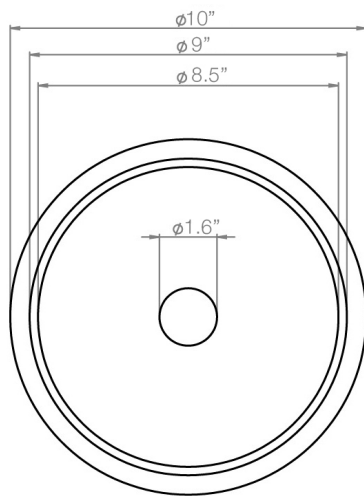
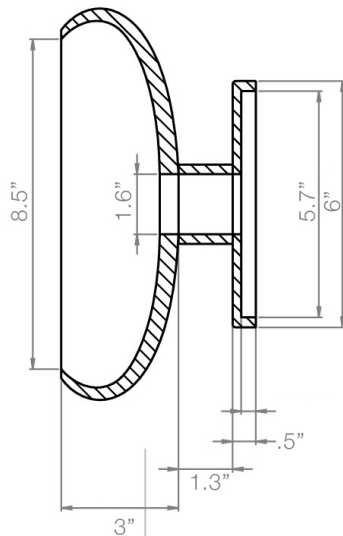


GREY MARBLE

*Each piece in this collection is cut from carefully selected stone blocks. Every natural stone product is unique; variation in color, tone, veining and pattern is to be expected as part of the stone's inherent characteristics. Markings, lines and crystallization are not imperfections, but rather a natural part of the stone's beauty. Images and samples are indicative of the color and characteristics of the stones we work with in this collection and are not meant to portray an exact representation of the actual piece that you will receive.*

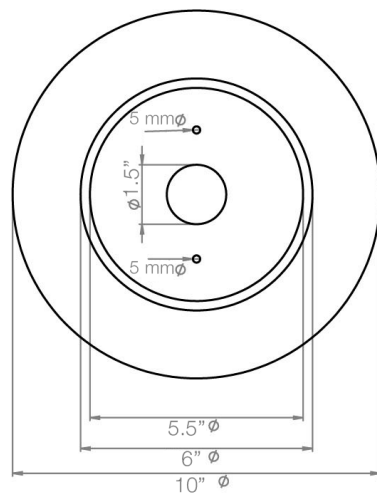


01 SIDE



02 FRONT

03 BACK



MAKING THE COLLECTION

